

15/20W

□70mm



## ● 电机特性

List of motor characteristics

电机型号 Motor model		规格 Specs	输出功率 Output Power W	电源电压 Voltage V	频率 Frequency Hz	电流 Current A	起动扭矩 Starting Torque		额定扭矩 Rated Torque		额定转速 Rated Revolution r/min	电容量/耐压 Capacity/Ve μ F/VAC
公司型号 JWD types	对应其它厂家 型号Other types						mN.m	gf.cm	mN.m	gf.cm		
70YYJT15-3	3IK15GK 3IK15A	感应 Induction	15	单相 1-phase 220	50	0.15	92	920	115	1150	1250	1.2/450
					60	0.14	76	760	95.5	955	1500	1.2/450
	3RK15GK 3RK15A	可逆Reversible 30min			50	0.16	110	1100	150	1500	1250	1.5/450
					60	0.18	92	920	127	1270	1500	1.5/450
70YYJT15-1	3IK15GK 3IK15A	感应 Induction	15	单相 1-phase 110	50	0.33	92	920	115	1150	1250	5/250
					60	0.30	76	760	95.5	955	1500	5/250
	3RK15GK 3RK15A	可逆Reversible 30min			50	0.36	110	1100	150	1500	1250	6/250
					60	0.38	92	920	127	1270	1500	6/250
70YSCJ15-4	3IK15GK 3IK15A	—	15	三相 3-phase 380	50	0.06	242	2420	115	1150	1250	—
70YSCJ15-3	3RK15GK 3RK15A	—	15	三相 3-phase 220	50	0.1	242	2420	115	1150	1250	—
					60	0.1	200	2000	95.5	955	1500	—
70YYJT20-3	3IK20GK 3IK20A	感应 Induction	20	单相 1-phase 220	50	0.22	90	900	150	1500	1250	2/450
					60	0.22	76	760	127	1270	1500	2/450
	3RK20GK 3RK20A	可逆Reversible 30min			50	0.26	140	1400	150	1500	1300	2.5/450
					60	0.28	120	1200	127	1270	1550	2.5/450
70YYJT20-1	3IK20GK 3IK20A	感应 Induction	20	单相 1-phase 110	50	0.45	90	900	150	1500	1250	8/250
					60	0.46	76	760	127	1270	1500	8/250
	3RK20GK 3RK20A	可逆Reversible 30min			50	0.54	140	1400	150	1500	1300	10/250
					60	0.58	120	1200	127	1270	1550	9/250

- 上表参数是指电机单体，不附加任何负荷装置。
- 电机额定转速、额定电流允许在±5%范围内变动。

- Parameters in above table refer to motor alone, without any load device.
- Permissible change in rated speed and rated current of the motor is within the range of ±5%.

## ● 减速电机允许负载

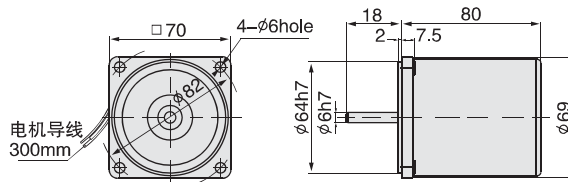
Allowable load for the gear motor

减速参数 Geared-down parameter	同步转速r/min Synchronous speed																	
	500	300	200	120	100	60	50	30	20	15	10	6	5	3	2	1.5	1	
	减速比i ratio																	
	3	5	7.5	12.5	15	25	30	50	75	100	150	250	300	500	750	1000	1500	
最大允许负载 Max allowable load	15W	$\frac{\text{Kg.cm}}{\text{N.m}}$ 2.86 0.28	4.81 0.48	7.51 0.75	11.8 1.18	14.7 1.47	21.5 2.15	23.5 2.35	39.27 3.92									50 4.9
	20W	$\frac{\text{Kg.cm}}{\text{N.m}}$ 3.52 0.35	5.80 0.58	8.74 0.87	14.5 1.45	17.15 1.71	26.1 2.61	30.4 3.04	45.6 4.56									50 4.9

- 转速是以电动机的同步转速为基准除以减速比而算出的数值。实际转速将随负载大小变化而比所示数值减少2~20%左右。
- 希望以大于上表的减速比进一步减速时，可在电动机与减速机之间安装减速比为10的中间减速机。
- 当负载扭矩超过减速电机最大允许负载扭矩，并有堵转情况存在时，请在减速箱输出轴和负载连接处加装扭矩限制装置，确保齿轮减速箱正常运行。
- The speed is based on the synchronous motor speed reduction ratio as a benchmark calculated by dividing the value of. Actual speed will vary the size of the load changes in less than the values shown in 2 ~ 20%.
- Hope to the table of the reduction ratio is greater than the further reduction, it would be installed between the motor and the reducer reduction ratio of 10 the middle of the reducer.
- When the load torque exceeds the maximum allowable load torque gear motor, and a locked rotor situation exists, please slow down box at the junction of the output shaft and load torque limit device installed to ensure the normal operation gearbox.

● 圆轴型 Circular shaft type

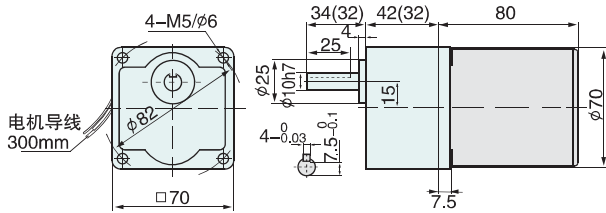
70YYJ15(20)  
70YSCJ15



结构：电动机  
重量：1.1kg

● 定速型 Optical axis type

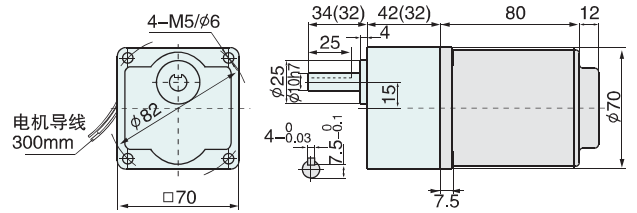
70YYJ15(20) /70GK□  
70YSCJ15



结构：减速器+电动机  
重量：1.6kg  
减速比：20-250；图中()内的数值速比为3-15

● 调速型 Speed regulation type

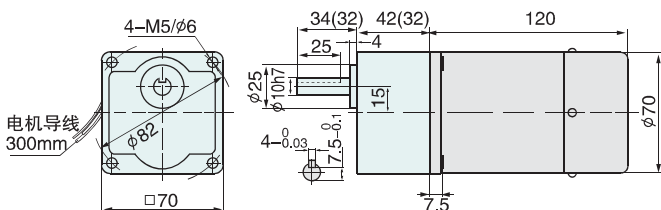
70YYJT15 ( 20 ) /70GK□



结构：减速器+电动机+调速器  
重量：1.7kg  
减速比：20-250；图中()内的数值速比为3-15

● 刹车定速型 Brake Optical axis type

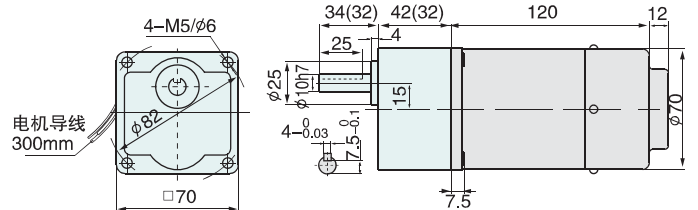
70YYJ15(20) /70GK□  
70YSCJ15



结构：减速器+电动机+刹车器  
重量：1.9kg  
减速比：20-250；图中()内的数值速比为3-15

● 刹车调速型 Brake Speed regulation type

70YYJT15 ( 20 ) /70GK□



结构：减速器+电动机+刹车器+调速器  
重量：2.0kg  
减速比：20-250；图中()内的数值速比为3-15

25/30W

□80mm



## ● 电机特性

List of motor characteristics

电机型号 Motor model		规格 Specs	输出功率 Output Power W	电源电压 Voltage V	频率 Frequency Hz	电流 Current A	起动扭矩 Starting Torque		额定扭矩 Rated Torque		额定转速 Rated Revolution r/min	电容量/耐压 Capacity/ve μ F/VAC
公司型号 JWD types	对应其它厂家 型号Other types						mN.m	gf.cm	mN.m	gf.cm		
80YYJT25-3	4IK25GK	感应 Induction	25	单相 1-phase 220	50	0.22	130	1300	185	1850	1300	1.5/450
	4IK25A				60	0.21	108	1080	154	1540	1550	1.5/450
	4RK25GK	可逆Reversible 30min			50	0.24	170	1700	185	1850	1300	2/450
	4RK25A				60	0.26	142	1420	154	1540	1550	2/450
80YYJT25-1	4IK25GK	感应 Induction	25	单相 1-phase 110	50	0.48	130	1300	185	1850	1300	6/250
	4IK25A				60	0.46	108	1080	154	1540	1550	6/250
	4RK25GK	可逆Reversible 30min			50	0.50	170	1700	185	1850	1300	8/250
	4RK25A				60	0.56	142	1420	154	1540	1550	8/250
80YSCJ25-4	4IK25GK 4IK25A	—	25	三相 3-phase 380	50	0.14	425	4250	185	1850	1300	—
80YSCJ25-3	4RK25GK 4RK25A	—	25	三相 3-phase 220	50	0.24	425	4250	185	1850	1300	—
					60	0.225	354	3540	154	1540	1550	—
80YYJT30-3	4IK30GK	感应 Induction	30	单相 1-phase 220	50	0.28	154	1540	220	2200	1300	2.2/450
	4IK30A				60	0.3	130	1300	185	1850	1550	2.2/450
	4RK30GK	可逆Reversible 30min			50	0.3	220	2200	220	2200	1300	2.5/450
	4RK30A				60	0.32	180	1800	185	1850	1550	2.5/450
80YYJT30-1	4IK30GK	感应 Induction	30	单相 1-phase 110	50	0.58	154	1540	220	2200	1300	8/250
	4IK30A				60	0.60	130	1300	185	1850	1550	8/250
	4RK30GK	可逆Reversible 30min			50	0.60	220	2200	220	2200	1300	10/250
	4RK30A				60	0.65	180	1800	185	1850	1550	10/250

- 上表参数是指电机单体，不附加任何负荷装置。
- 电机额定转速、额定电流允许在±5%范围内变动。

- Parameters in above table refer to motor alone, without any load device.
- Permissible change in rated speed and rated current of the motor is within the range of ± 5%.

## ● 减速电机允许负载

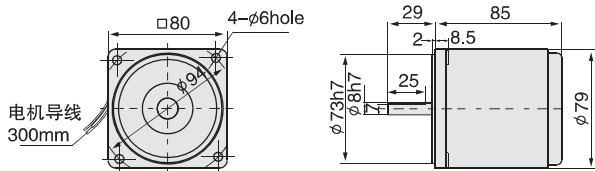
Allowable load for the gear motor

减速参数 Geared-down parameter	同步转速r/min Synchronous speed		500	300	200	120	100	60	50	30	20	15	10	6	5	3	2	1.5	1
	减速比i ratio		3	5	7.5	12.5	15	25	30	50	75	100	150	250	300	500	750	1000	1500
最大允许负载 Max allowable load	25W	$\frac{\text{Kg.cm}}{\text{N.m}}$	4.5 0.45	7.9 0.79	12 1.18	19 1.86	23 2.25	35 3.43	42 4.12	62 6.18	80 7.84								
	30W	$\frac{\text{Kg.cm}}{\text{N.m}}$	5.7 0.56	8.1 0.8	12.3 1.2	20.5 2.0	24.3 2.4	40.2 4.0	42.5 4.2	65.7 6.5	80 7.84								

- 转速是以电动机的同步转速为基准除以减速比而算出的数值。实际转速将随负载大小变化而比所示数值减少2~20%左右。
- 希望以大于上表的减速比进一步减速时，可在电动机与减速机之间安装减速比为10的中间减速机。
- 当负载扭矩超过减速电机最大允许负载扭矩，并有堵转情况存在时，请在减速箱输出轴和负载连接处加装扭矩限制装置，确保齿轮减速箱正常运行。
- The speed is based on the synchronous motor speed reduction ratio as a benchmark calculated by dividing the value of. Actual speed will vary the size of the load changes in less than the values shown in 2 ~ 20%.
- Hope to the table of the reduction ratio is greater than the further reduction, it would be installed between the motor and the reducer reduction ratio of 10 the middle of the reducer.
- When the load torque exceeds the maximum allowable load torque gear motor, and a locked rotor situation exists, please slow down box at the junction of the output shaft and load torque limit device installed to ensure the normal operation gearbox.

● 圆轴型 Circular shaft type

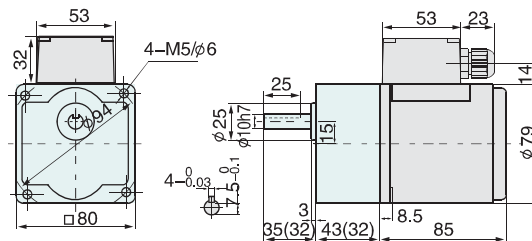
80YYJ25(30)  
80YSCJ25



结构：电动机  
重量：1.5kg

● 带端子箱型 With terminal box type

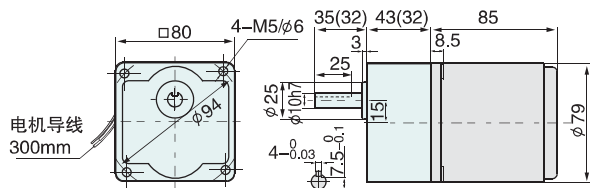
80YYJ25(30) /80GK□  
80YSCJ25



结构：减速器+电动机+端子箱  
重量：2.2kg  
减速比：20-250；图中()内的数值速比为3-15

● 定速型 Optical axis type

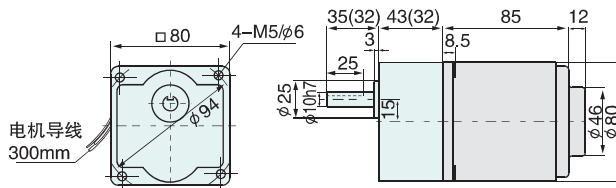
80YYJ25(30) /80GK□  
80YSCJ25



结构：减速器+电动机  
重量：2.1kg  
减速比：20-250；图中()内的数值速比为3-15

● 调速型 Speed regulation type

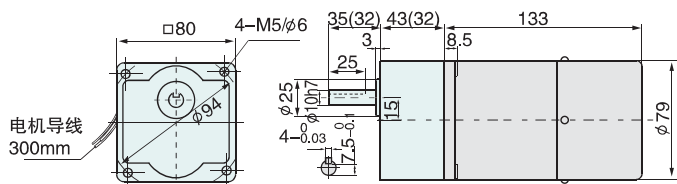
80YYJT25 ( 30 ) /80GK□



结构：减速器+电动机+调速器  
重量：2.2kg  
减速比：20-250；图中()内的数值速比为3-15

● 刹车定速型 Brake Optical axis type

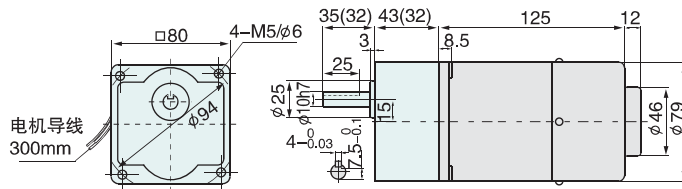
80YYJ25(30) /80GK□  
80YSCJ25



结构：减速器+电动机+刹车器  
重量：2.4kg  
减速比：20-250；图中()内的数值速比为3-15

● 刹车调速型 Brake Speed regulation type

80YYJT25 ( 30 ) /80GK□



结构：减速器+电动机+刹车器+调速器  
重量：2.5kg  
减速比：20-250；图中()内的数值速比为3-15

40W

□90mm



## ● 电机特性

List of motor characteristics

电机型号 Motor model		规格 Specs	输出功率 Output Power W	电源电压 Voltage V	频率 Frequency Hz	电流 Current A	起动扭矩 Starting Torque		额定扭矩 Rated Torque		额定转速 Rated Revolution r/min	电容量耐压 Capacity/ve μ F/VAC
公司型号 JWD types	对应其它厂家 型号Other types						mN.m	gf.cm	mN.m	gf.cm		
90YYJT40-3	5IK40GK 5IK40A	感应 Induction	40	单相 1-phase 220	50	0.35	206	2060	294	2940	1300	2.5/450
					60	0.33	172	1720	246	2460	1550	2.5/450
	5RK40GK 5RK40A	可逆Reversible 30min			50	0.38	270	2700	294	2940	1300	3.0/450
					60	0.4	226	2260	246	2460	1550	3.0/450
90YYJT40-1	5IK40GK 5IK40A	感应 Induction	40	单相 1-phase 110	50	0.70	206	2060	294	2940	1300	10/250
					60	0.72	172	1720	246	2460	1550	10/250
	5RK40GK 5RK40A	可逆Reversible 30min			50	0.76	270	2700	294	2940	1300	12/250
					60	0.80	226	2260	246	2460	1550	12/250
90YSCJ40-4	5IK40GK 5IK40A	—	40	三相 3-phase 380	50	0.24	676	6760	294	2940	1300	—
					60	0.22	566	5660	246	2460	1550	—
90YSCJ40-3	5RK40GK 5RK40A	—	40	三相 3-phase 220	50	0.42	676	6760	294	2940	1300	—
					60	0.38	566	5660	246	2460	1550	—

- 上表参数是指电机单体，不附加任何负荷装置。
- 电机额定转速、额定电流允许在±5%范围内变动。
- Parameters in above table refer to motor alone, without any load device.
- Permissible change in rated speed and rated current of the motor is within the range of ±5%.

## ● 减速电机允许负载

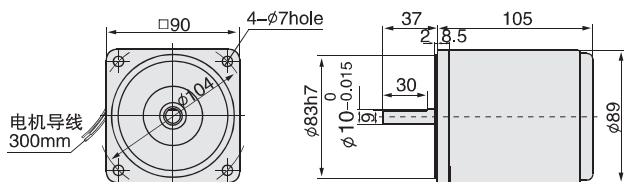
Allowable load for the gear motor

减速参数 Geared-down parameter	同步转速r/min Synchronous speed		500	300	200	120	100	60	50	30	20	15	10	6	5	3	2	1.5	1
	减速比 ratio		3	5	7.5	12.5	15	25	30	50	75	100	150	250	300	500	750	1000	1500
最大允许负载 Max allowable load	40W	$\frac{\text{Kg.cm}}{\text{N.m}}$	7.3 0.72	12 1.18	18 1.77	30 2.94	36 3.53	55 5.0	65 6.47	100 9.81									

- 转速是以电动机的同步转速为基准除以减速比而算出的数值。实际转速将随负载大小变化而比所示数值减少2~20%左右。
- 希望以大于上表的减速比进一步减速时，可在电动机与减速机之间安装减速比为10的中间减速机。
- 当负载扭矩超过减速电机最大允许负载扭矩，并有堵转情况存在时，请在减速箱输出轴和负载连接处加装扭矩限制装置，确保齿轮减速箱正常运行。
- The speed is based on the synchronous motor speed reduction ratio as a benchmark calculated by dividing the value of. Actual speed will vary the size of the load changes in less than the values shown in 2 ~ 20%.
- Hope to the table of the reduction ratio is greater than the further reduction, it would be installed between the motor and the reducer reduction ratio of 10 the middle of the reducer.
- When the load torque exceeds the maximum allowable load torque gear motor, and a locked rotor situation exists, please slow down box at the junction of the output shaft and load torque limit device installed to ensure the normal operation gearbox.

● 圆轴型 Circular shaft type

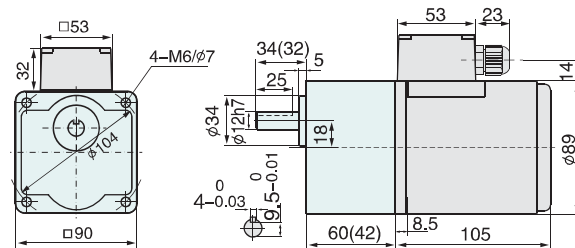
90YYJ40  
90YSCJ40



结构: 电动机  
重量: 2.3kg

● 带端子箱型 With terminal box type

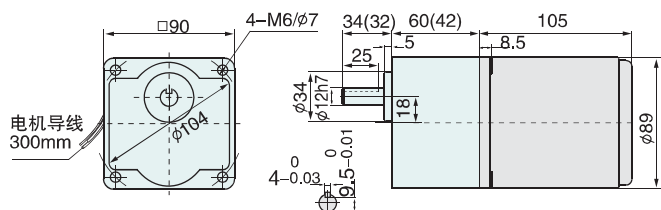
90YYJ40 /90GK□  
90YSCJ40



结构: 减速器+电动机+端子箱  
重量: 3.5kg  
减速比: 20-250; 图中()内的数值速比为3-15

● 定速型 Optical axis type

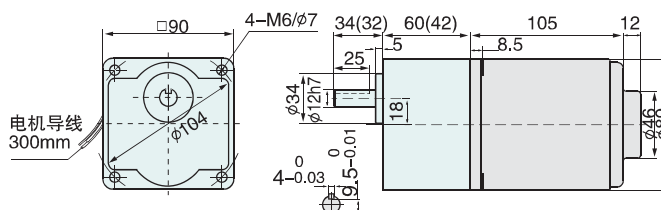
90YYJ40 /90GK□  
90YSCJ40



结构: 减速器+电动机  
重量: 3.4kg  
减速比: 20-250; 图中()内的数值速比为3-15

● 调速型 Speed regulation type

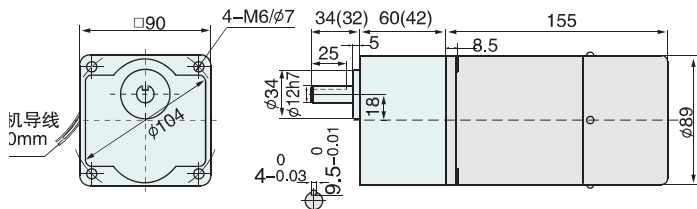
90YYJT40/90GK□



结构: 减速器+电动机+调速器  
重量: 3.5kg  
减速比: 20-250; 图中()内的数值速比为3-15

● 刹车定速型 Brake Optical axis type

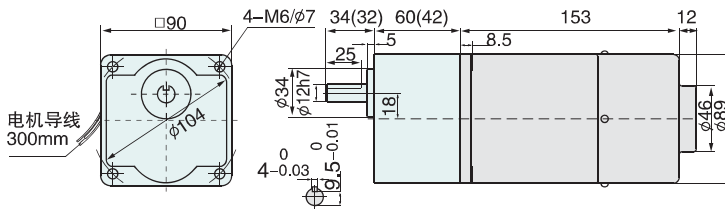
90YYJ40 /90GK□  
90YSCJ40



结构: 减速器+电动机+刹车器  
重量: 3.7kg  
减速比: 20-250; 图中()内的数值速比为3-15

● 刹车调速型 Brake Speed regulation type

90YYJT40/90GK□



结构: 减速器+电动机+刹车器+调速器  
重量: 3.8kg  
减速比: 20-250; 图中()内的数值速比为3-15

60W

□90mm



## ● 电机特性

List of motor characteristics

电机型号 Motor model		规格 Specs	输出功率 Output Power W	电源电压 Voltage V	频率 Frequency Hz	电流 Current A	起动扭矩 Starting Torque		额定扭矩 Rated Torque		额定转速 Rated Revolution r/min	电容容量/耐压 Capacity/ve μ F/VAC
公司型号 JWD types	对应其它厂家 型号Other types						mN.m	gf.cm	mN.m	gf.cm		
90YYJT60-3	5IK60GK 5IK60A	感应 Induction	60	单相 1-phase 220	50	0.45	380	3800	441	4410	1300	3.5/450
					60	0.48	319	3190	370	3700	1550	3.5/450
	5RK60GK 5RK60A	可逆Reversible 30min			50	0.5	400	4000	670	6700	1300	4/450
					60	0.52	336	3360	554	5540	1550	4/450
90YYJT60-1	5IK60GK 5IK60A	感应 Induction	60	单相 1-phase 110	50	0.90	380	3800	441	4410	1300	14/250
					60	0.88	319	3190	370	3700	1550	14/250
	5RK60GK 5RK60A	可逆Reversible 30min			50	1.0	400	4000	670	6700	1300	16/250
					60	1.2	336	3360	554	5540	1550	16/250
90YSCJ60-4	5IK60GK 5IK60A	—	60	三相 3-phase 380	50	0.30	1014	10140	441	4410	1300	—
					60	0.28	851	8510	370	3700	1550	—
90YSCJ60-3	5RK60GK 5RK60A	—	60	三相 3-phase 220	50	0.52	1014	10140	441	4410	1300	—
					60	0.48	851	8510	370	3700	1550	—

- 上表参数是指电机单体，不附加任何负荷装置。
- 电机额定转速、额定电流允许在±5%范围内变动。
- Parameters in above table refer to motor alone, without any load device.
- Permissible change in rated speed and rated current of the motor is within the range of ±5%.

## ● 减速电机允许负载

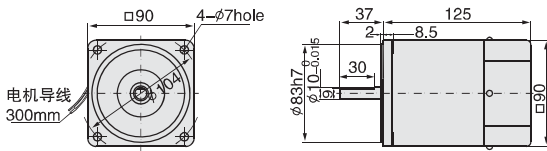
Allowable load for the gear-down motor

减速参数 Geared-down parameter	同步转速r/min Synchronous speed		500	300	200	120	100	60	50	30	20	15	10	6	5	3	2	1.5	1
	减速比i ratio		3	5	7.5	12.5	15	25	30	50	75	100	150	250	300	500	750	1000	1500
最大允许负载 Max allowable load	60W	$\frac{\text{Kg.cm}}{\text{N.m}}$	11 1.08	18 1.77	27 2.64	41 4.02	50 4.80	74 7.25	89 8.73	150 14.71									

- 转速是以电动机的同步转速为基准除以减速比而算出的数值。实际转速将随负载大小变化而比所示数值减少2~20%左右。
- 希望以大于上表的减速比进一步减速时，可在电动机与减速机之间安装减速比为10的中间减速机。
- 当负载扭矩超过减速电机最大允许负载扭矩，并有堵转情况存在时，请在减速箱输出轴和负载连接处加装扭矩限制装置，确保齿轮减速箱正常运行。
- The speed is based on the synchronous motor speed reduction ratio as a benchmark calculated by dividing the value of. Actual speed will vary the size of the load changes in less than the values shown in 2 ~ 20%.
- Hope to the table of the reduction ratio is greater than the further reduction, it would be installed between the motor and the reducer reduction ratio of 10 the middle of the reducer.
- When the load torque exceeds the maximum allowable load torque gear motor, and a locked rotor situation exists, please slow down box at the junction of the output shaft and load torque limit device installed to ensure the normal operation gearbox.

● 圆轴型 Circular shaft type

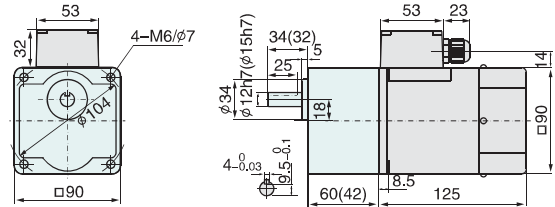
90YYJ60  
90YSCJ60



结构：电动机  
重量：2.6 kg

● 带端子箱型 With terminal box type

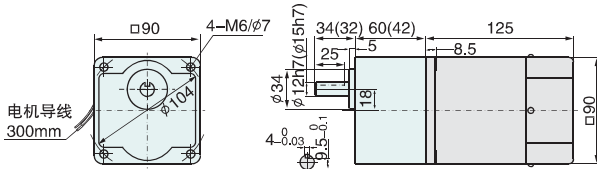
90YYJ60 /90GK□  
90YSCJ60



结构：减速器+电动机+端子箱  
重量：3.9 kg  
减速比：20-250；图中()内的数值速比为3-15

● 定速型 Optical axis type

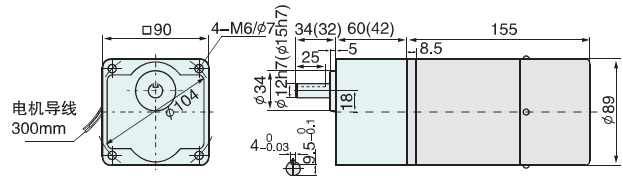
90YYJ60 /90GK□  
90YSCJ60



结构：减速器+电动机  
重量：3.8 kg  
减速比：20-250；图中()内的数值速比为3-15

● 刹车定速型 Brake Optical axis type

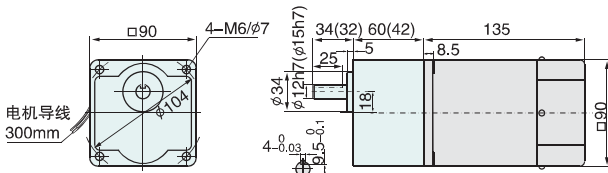
90YYJ60 /90GK□  
90YSCJ60



结构：减速器+电动机+刹车器  
重量：4kg  
减速比：20-250；图中()内的数值速比为3-15

● 调速型 Speed regulation type

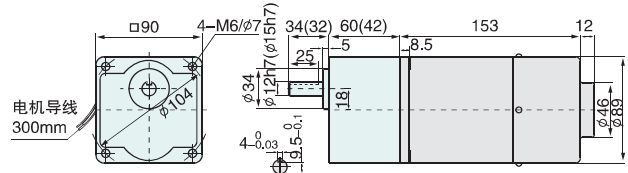
90YYJT60/90GK□



结构：减速器+电动机+调速器  
重量：3.9kg  
减速比：20-250；图中()内的数值速比为3-15

● 刹车调速型 Brake Speed regulation type

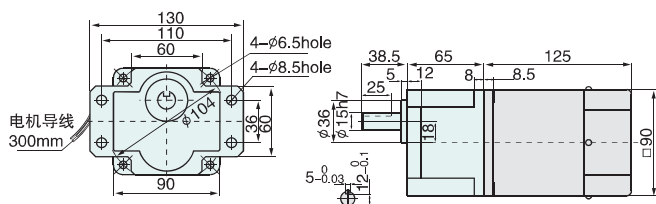
90YYJT60/90GK□



结构：减速器+电动机+刹车器+调速器  
重量：4.1kg  
减速比：20-250；图中()内的数值速比为3-15

● 90GS定速型 Optical axis type

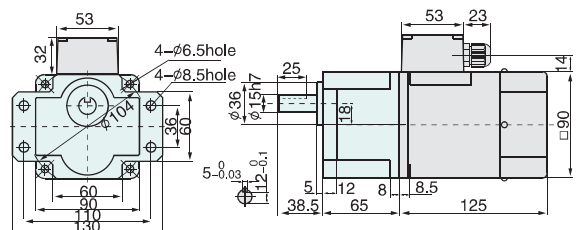
90YYJ60 /90GS□  
90YSCJ60



结构：减速器+电动机+调速器  
重量：3.9kg  
减速比：20-250；图中()内的数值速比为3-15

● 90GS带端子箱型 With terminal box type

90YYJ60 /90GS□  
90YSCJ60



结构：减速器+电动机+端子箱  
重量：4 kg  
减速比：20-250；图中()内的数值速比为3-15



## 90/120W

□90mm



## ● 电机特性

List of motor characteristics

电机型号 Motor model		规格 Specs	输出功率 Output Power W	电源电压 Voltage V	频率 Frequency Hz	电流 Current A	起动扭矩 Starting Torque		额定扭矩 Rated Torque		额定转速 Rated Revolution r/min	电容量/耐压 Capacity/ve μ F/VAC
公司型号 JWD types	对应其它厂家 型号Other types						mN.m	gf.cm	mN.m	gf.cm		
90YYJT90-3	5IK90GK 5IK90A	感应 Induction	90	单相 1-phase 220	50	0.62	600	6000	670	6700	1300	5/450
		60			0.60	496	4960	554	5540	1550	5/450	
	可逆Reversible 30min	50			0.68	636	6360	670	6700	1300	6/450	
		60			0.72	526	5260	554	5540	1550	6/450	
90YYJT90-1	5IK90GK 5IK90A	感应 Induction	90	单相 1-phase 110	50	1.25	600	6000	670	6700	1300	20/250
		60			1.2	496	4960	554	5540	1550	18/250	
	可逆Reversible 30min	50			1.38	636	6360	670	6700	1300	24/250	
		60			1.5	526	5260	554	5540	1550	24/250	
90YSCJ90-4	5IK90GK 5IK90A	—	90	三相 3-phase 380	50	0.32	1541	15410	670	6700	1300	—
90YSCJ90-3	5RK90GK 5RK90A	—	90	三相 3-phase 220	50	0.55	1541	15410	670	6700	1250	—
					60	0.48	1274	12740	554	5540	1500	—
90YYJT120-3	5IK120GK 5IK120A	感应 Induction	120	单相 1-phase 220	50	0.85	625	6250	910	9100	1250	6/450
		60			0.82	525	5250	764	7640	1500	6/450	
	可逆Reversible 30min	50			0.95	860	8600	910	9100	1250	8/450	
		60			1.0	722	7220	764	7640	1500	8/450	
90YYJT120-1	5IK120GK 5IK120A	感应 Induction	120	单相 1-phase 110	50	1.7	625	6250	910	9100	1250	24/250
		60			1.65	525	5250	764	7640	1500	24/250	
	可逆Reversible 30min	50			1.9	860	8600	910	9100	1250	30/250	
		60			2.1	722	7220	764	7640	1500	30/250	
90YSCJ120-4	5IK120GK 5IK120A	—	120	三相 3-phase 380	50	0.34	2000	20000	910	9100	1250	—
					60	0.31	1680	16800	764	7640	1500	—
90YSCJ120-3	5RK120GK 5RK120A	—	120	三相 3-phase 220	50	0.59	2000	20000	910	9100	1250	—
					60	0.54	1680	16800	764	7640	1500	—

- 上表参数是指电机单体，不附加任何负荷装置。
- 电机额定转速、额定电流允许在±5%范围内变动。

- Parameters in above table refer to motor alone, without any load device.
- Permissible change in rated speed and rated current of the motor is within the range of ±5%.

## ● 减速电机允许负载

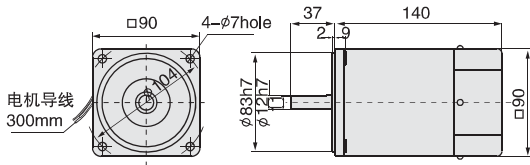
Allowable load for the gear motor

减速参数 Geared-down parameter	同步转速r/min Synchronous speed		500	300	200	120	100	60	50	30	20	15	10	6	5	3	2	1.5	1	
	减速比i ratio		3	5	7.5	12.5	15	25	30	50	75	100	150	250	300	500	750	1000	1500	
最大允许负载 Max allowable load	90W	Kg.cm	17.3	26.5	41.8	69.4	80.6	140												200
		N.m	1.7	2.6	4.1	6.8	7.9	13.7												19.71
	120W	Kg.cm	21.5	36	54	82	98	148												200
		N.m	2.11	3.52	5.28	8.04	9.6	14.5												19.71

- 转速是以电动机的同步转速为基准除以减速比而算出的数值。实际转速将随负载大小变化而比所示数值减少2~20%左右。
- 希望以大于上表的减速比进一步减速时，可在电动机与减速机之间安装减速比为10的中间减速机。
- 当负载扭矩超过减速电机最大允许负载扭矩，并有堵转情况存在时，请在减速箱输出轴和负载连接处加装扭矩限制装置，确保齿轮减速箱正常运行。
- The speed is based on the synchronous motor speed reduction ratio as a benchmark calculated by dividing the value of. Actual speed will vary the size of the load changes in less than the values shown in 2 ~ 20%.
- Hope to the table of the reduction ratio is greater than the further reduction, it would be installed between the motor and the reducer reduction ratio of 10 the middle of the reducer.
- When the load torque exceeds the maximum allowable load torque gear motor, and a locked rotor situation exists, please slow down box at the junction of the output shaft and load torque limit device installed to ensure the normal operation gearbox.

● 圆轴型 Circular shaft type

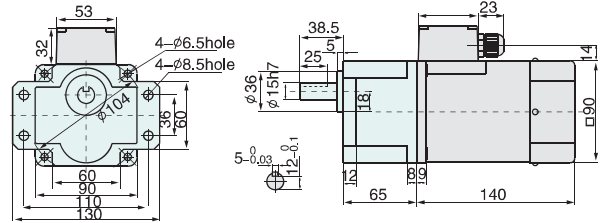
90YYJ90(120)  
90YSCJ90(120)



结构: 电动机  
重量: 3.1 kg

● 带端子箱型 With terminal box type

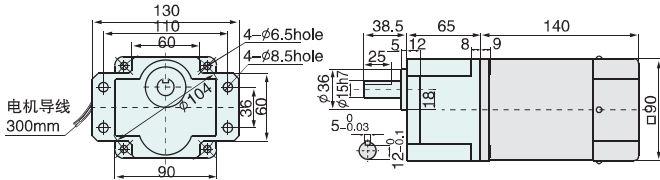
90YYJ90(120) /90GS□  
90YSCJ90(120)



结构: 减速器+电动机+端子箱  
重量: 4.5 kg

● 定速型 Optical axis type

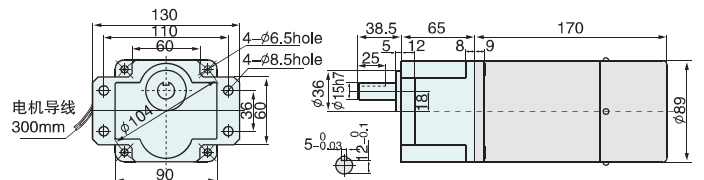
90YYJ90(120) /90GS□  
90YSCJ90(120)



结构: 减速器+电动机  
重量: 4.4 kg

● 刹车定速型 Brake Optical axis type

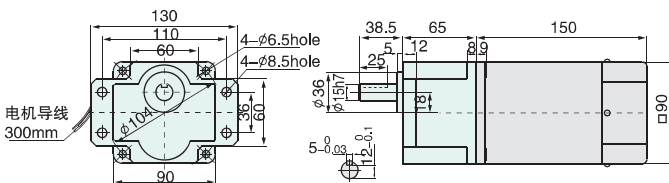
90YYJ90(120) /90GS□  
90YSCJ90(120)



结构: 减速器+电动机+刹车器  
重量: 4.9 kg

● 调速型 Speed regulation type

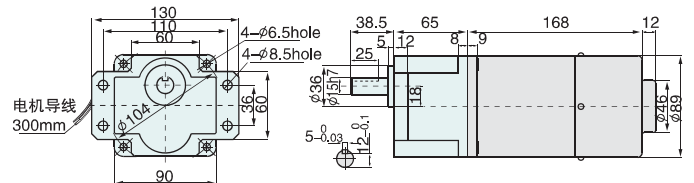
90YYJT90 (120) /90GS□



结构: 减速器+电动机+调速器  
重量: 4.5 kg

● 刹车调速型 Brake Speed regulation type

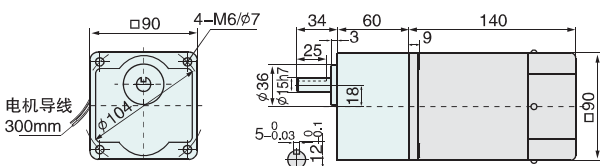
90YYJT90 (120) /90GS□



结构: 减速器+电动机+刹车器+调速器  
重量: 4.9 kg

● 90GK定速型 Optical axis type

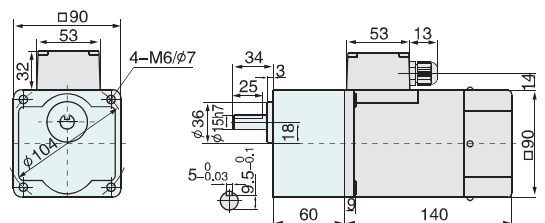
90YYJ90(120) /90GK□  
90YSCJ90(120)



结构: 减速器+电动机  
重量: 4.3 kg

● 90GK带端子箱型 With terminal box type

90YYJ90(120) /90GK□  
90YSCJ90(120)



结构: 减速器+电动机+端子箱  
重量: 4.3 kg

## 120/140W

□100mm



## ● 电机特性

List of motor characteristics

电机型号 Motor model		规格 Specs	输出功率 Output Power W	电源电压 Voltage V	频率 Frequency Hz	电流 Current A	起动扭矩 Starting Torque		额定扭矩 Rated Torque		额定转速 Rated Revolution r/min	电容量/耐压 Capacity/Ne μ F/VAC
公司型号 JWD types	对应其它厂家 型号Other types						mN.m	gf.cm	mN.m	gf.cm		
100YYJT120-3	6K120GK 6K120A	感应 Induction	120	单相 1-phase 220	50	1.0	550	5500	880	8800	1300	6/450
					60	1.0	460	4600	740	7400	1550	6/450
	6RK120GK 6RK120A	可逆Reversible 30min			50	1.2	770	7700	1260	12600	1300	8/450
					60	1.4	648	6480	980	9800	1550	8/450
100YYJT120-1	6K120GK 6K120A	感应 Induction	120	单相 1-phase 110	50	1.7	550	5500	880	8800	1300	30/250
					60	1.6	460	4600	740	7400	1550	28/250
	6RK120GK 6RK120A	可逆Reversible 30min			50	1.8	770	7700	1260	12600	1300	32/250
					60	2.0	648	6480	980	9800	1550	32/250
100YSCJ120-4	6K120GK 6K120A	—	120	三相 3-phase 380	50	0.46	2024	20240	880	8800	1300	—
100YSCJ120-3	6RK120GK 6RK120A	—	120	三相 3-phase 220	50	0.8	2024	20240	880	8800	1300	—
					60	0.73	1700	17000	740	7400	1550	—
100YYJT140-3	6K140GK 6K140A	感应 Induction	140	单相 1-phase 220	50	1.23	662	6620	1028	10280	1300	8/450
					60	1.12	540	5400	863	8630	1550	8/450
	6RK140GK 6RK140A	可逆Reversible 30min			50	1.3	885	8850	1028	10280	1300	10/450
					60	1.43	714	7140	863	8630	1550	10/450
100YYJT140-1	6K140GK 6K140A	感应 Induction	140	单相 1-phase 110	50	2.05	662	6620	1028	10280	1300	32/250
					60	1.9	540	5400	863	8630	1550	30/250
	6RK140GK 6RK140A	可逆Reversible 30min			50	2.2	885	8850	1028	10280	1300	40/250
					60	2.4	714	7140	863	8630	1550	32/250
100YSCJ140-4	6K140GK 6K140A	—	140	三相 3-phase 380	50	0.55	2362	23620	1028	10280	1300	—
					60	0.46	1984	19840	863	8630	1550	—
100YSCJ140-3	6RK140GK 6RK140A	—	140	三相 3-phase 220	50	0.88	2764	27640	1028	10280	1300	—
					60	0.80	2266	22660	863	8630	1550	—

- 上表参数是指电机单体，不附加任何负荷装置。
- 电机额定转速、额定电流允许在 $\pm 5\%$ 范围内变动。

- Parameters in above table refer to motor alone, without any load device.
- Permissible change in rated speed and rated current of the motor is within the range of  $\pm 5\%$ .

## ● 减速电机允许负载

Allowable load for the gear-down motor

减速参数 Geared-down parameter	同步转速r/min Synchronous speed		500	300	200	120	100	60	50	30	20	15	10	6	5	3	2	1.5	1	
	减速比 ratio		3	5	7.5	12.5	15	25	30	50	75	100	150	250	300	500	750	1000	1500	
最大允许负载 Max allowable load	120W	Kg.cm	21.5	36	54	85	103	172												255
		N.m	2.11	3.52	5.28	8.45	10.2	16.9												25
	140W	Kg.cm	25.1	42	63	99.2	120	200.7												255
		N.m	2.46	4.11	6.16	9.86	11.8	19.73												25

- 转速是以电动机的同步转速为基准除以减速比而算出的数值。实际转速将随负载大小变化而比所示数值减少2~20%左右。
- 希望以大于上表的减速比进一步减速时，可在电动机与减速机之间安装减速比为10的中间减速机。
- 当负载扭矩超过减速电机最大允许负载扭矩，并有堵转情况存在时，请在减速箱输出轴和负载连接处加装扭矩限制装置，确保齿轮减速箱正常运行。
- The speed is based on the synchronous motor speed reduction ratio as a benchmark calculated by dividing the value of. Actual speed will vary the size of the load changes in less than the values shown in 2 ~ 20%.
- Hope to the table of the reduction ratio is greater than the further reduction, it would be installed between the motor and the reducer reduction ratio of 10 the middle of the reducer.
- When the load torque exceeds the maximum allowable load torque gear motor, and a locked rotor situation exists, please slow down box at the junction of the output shaft and load torque limit device installed to ensure the normal operation gearbox.